

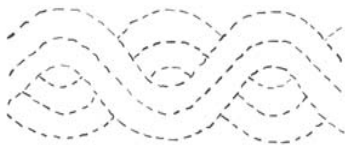
# Heartstring Quilters

## In This Issue:

*Art Mural  
Story Quilt*

*June Pot Luck  
Meeting  
Directions*

*Treasurer's Report*



## Upcoming Meetings

**June 9**  
**Spring Pot Luck!**  
**6:30 PM**

**July 14**

**August 11**

## President's Message

It is hard to believe that another year has gone by and it is time for our pot-luck supper and elections, as well as voting for our new space at Lankenau Hospital. It was generally agreed that the meeting space was better than the church, (no, nothing is perfect, but this seemed pretty good), however a vote is still needed, which will be done at the June meeting. If you cannot attend, please proxy your vote to either Suzan or myself, so you can be counted in on this big decision.

Special thanks to Cindy Friedman for maintaining our financial records, Judy Fliegelman for her meeting minutes, Annie Cohen and Susan Soiferman for programming, Karoline Wal-

lace for her website help and membership, Toni Cox for refreshments and Jim Vander Noot for doing such a great job each and every month with the newsletter.

On our drive home after the meeting, Suzan and I have always said that the best part of Heartstings is the show and tell. I would like to amend that... the best part of Heartstrings is the wonderful, creative women and man that make this guild so special.

Piecefully yours,

*Robin and Suzan*

## Program Notes

The scheduled March 2006 speaker, Diane Pieri, will be showing her gouache paintings at the Rosenfeld Gallery, 113 Arch Street, through June 26, 2005. The show opening is Sunday, June 5, 12-5PM.

## Cultivated Cottons

Special thanks to Lonni Rossi for bringing her new "Cultivated Cottons" fat quarter packages to the May meeting. What a wonderful array of colors and textures! They're sure to inspire a great variety of new quilts!

# May Meeting Minutes

*May 10, 2005*

Robin and Suzan opened the meeting in our new venue by welcoming us all and thanking Diana Hutchins for helping us to find such luxurious surroundings. Everything worked out beautifully for our meeting needs. The guild will even subsidize our parking fee to the tune on \$1 per car or we can park in the free employees lot and just walk a bit further.

\*Joanne Dooley offered her home for the Pot Luck Dinner, Thursday June 9 at 6:30. A sign-up sheet for food was passed around and will also appear in the newsletter. Directions and address will be in the newsletter as well.

\*Handbag Retreat is this Saturday, May 14 at Robin's. See her for further info.

\*Judy Fliegelman has asked for a volunteer to mail out the snail-mail newsletters. Please see her if you can take over this job for the guild.

\*Gwen Gatto and Susan Brooks, our new program chairs are hard at work getting speakers for future meetings. Now they can let speakers know that we can provide power point and rear projection capabilities.

\*Annie Cohen introduced our speaker for the evening, Barbara Olson, Billings Montana. Barbara showed slides

of her art quilts. She spoke of her journey as a quilter and her spiritual tools.

Show and Tell:

1. Cindy Friedman, otherwise known as the Zipper Queen, had two new additions to her zipper collection to share with us. Cindy also showed wall hangings, one of bulbs and growing things made of fused organza and the other called X-Chromosomes. This was in silk in lovely shades of blues, greens and yellows. In addition, Cindy showed us a fantastic lime green suit made for a wedding. The suit consisted of a silk Skirt, Jacket and Tunic.
2. Debbie Schwartzman brought in a commissioned piece of silk and organza geraniums and clematis done in her signature hexagon style.
3. Suzan Hirsch shared a small wall hanging of grasses and sky in silk greens and blues.
4. Joanne Doley showed a lovely wall hanging made of vintage kimono scraps. She also showed the 4 panel quilt made by 4 seventh and eighth grade classes from the Meredith School. Joanne helped the students and then put the quilt together so that it can hang in the school auditorium.
5. Lonni Rossi brought in her latest fabric collection, Cultivated Cot-

tons. Now we can make quilts with beautiful stylized corn on the cob, mushrooms, artichokes, onions and peppers in fantastic colors.

6. Susan Soiferman showed us a colorful Jane Sassaman quilt made with flying geese and blocks of Jane's colorful fabric.

7. Barbara Lawn showed a large piece of Shibori dyed fabric.

8. Renee Neibauer brought in a purse made of scraps and a large piece of copper colored shibori silk.

9. Toni Cox brought in the results of her "playing" with inkjet scanned images, crumbled aluminum foil stamped, painted fabric sewed into four sections. She started with muslin ironed onto freezer paper and ended up with beautifully textured pieces.

10. Margo Clyma showed us a delightful baby quilt and a very touching memory quilt made for a very sick friend. Margo was wearing a great vest she made from a Maggie Walker pattern.

As usual our Show and Tell was varied, innovative and exciting.

Respectfully Submitted  
JUDY FLIEGELMAN

## Art Mural Story Quilt Unveiled

The art mural story quilt that I created with three third grade classes was unveiled at Hartranft Elementary School. Representing African American history, we covered the Transatlantic Slave Trade, the Underground Railroad and the Civil Rights Movement. Using composites of the student's art work, I created three panels, one for each topic. The quilt will be exhibited at the University of the Arts on June 10, along with student artwork and projects city-wide. The quilt will be hung in a hallway at the school, which is located at 8th and Cumberland. The Village of Arts and Humanities partnered with the school to sponsor my position as a teaching artist resident.

Tonight, the four large quilted panels Joanne Dooley and I worked on in partnership with Fleisher Art Memorial was dedicated at Meredith School in South Philadelphia. As one of two teaching artist residents, I worked with two eighth grade classes to create artwork representing "Community Cloth: Weaving Cultures Together." The panels reflect the diversity of cultures through art motifs, graphic symbols and narratives. It was a dynamic experience for all.

— Christina Johnson

## Heartstring Quilters

The newsletter of Heartstring Quilters is published monthly. Monthly meetings are held the second Thursday of every month at 7:30 PM.

Membership dues: \$25/year  
Guest fee: \$3, \$5 if there is a speaker

## Officers & Committees

### Effective September 2004

President: Suzan Hirsch,  
Robin Levenberg  
Co-Secretary #1: Judy Fliegelman  
Co-Secretary #2: Marcy George  
Treasurer: Cindy Friedman  
Hospitality: Toni Cox  
Programs: Annie Cohen, Sue Soiferman  
Newsletter: Jim Vander Noot,  
Judy Fliegelman  
Membership: Karoline Wallace  
Pin Committee: Tracey Kuehn, Cindy Friedman,  
Marcy George, Mary Ivory,  
Soryl Angel, Bonnie Atwood,  
Jo-Ann Dooley, Debbie Schwartzman  
Library: Lin Vandenberg,  
Publicity: TBD  
Raffle: Terri Ciampitti  
Sunshine: Soryl Angel  
Web Site: Karoline Wallace

### Newsletter Submissions

Send (or deliver) items for the newsletter, address changes, announcements of shows, information from other guilds, etc. by the 23<sup>rd</sup> of each month to:

[jvandernoot@comcast.net](mailto:jvandernoot@comcast.net)

## Treasurer's Report

Our current bank balance is just under \$4800. And that is a very good place to be at this time of the year but we need to keep making and selling pins in order to maintain our security. If we continue to meet at the Lankenau hospital facility, there is no rent charged by them so we save that as a monthly expense. But we are subsidizing the parking, so it amounts to about the same difference. If we are going to continue to meet at the Lankenau facility, we need to formally let the church know that we are not renewing our rental with them and return their key.

We also need to discuss the group insurance policy we took out two years ago which will come up for renewal in July -- do we want and or need to continue to carry this policy. I suggest this is on the agenda for discussion at the June potluck.

I also have two suggestions to consider as a guild: first that we sell our current projector on Ebay and replace it with one that has an auto-focus feature and a long remote cord to make it easier to use when we have guest speakers, and my second suggestion is that we close our current bank account at the Bank of America and open a new account at a more stable institution after we apply for our own EIN. Bank of America has been through several different reincarnations while I have been the treasurer -- it has been Fleet, Summit and now BoA and they keep losing track of our accounts ... not to mention that all our checks say Summit Bank which no longer exists.)

And finally I want to make you all aware that the Linda Creed Candlelighting which is the First (1st) of October is going to move its location this year -- it has been held at the Art Museum steps in the past years, but is moving this fall to the National Park Service second mall block, between 5th and 6th St. north of Market Street. They are hoping to attract more passerby and folks headed out to dinner crowd. I will share the details as they are provided, but we should plan to have a good supply of pins made by October. That's my story and I'm sticking to it!

— Cindy Friedman



### Refreshments

#### June

#### Spring Pot Luck!

#### July

Trish Robbins — beverage/snack  
Lonni Rossi — savory  
Anita Schechter — sweet/dessert

#### August

Debbie Schwartzman — beverage/snack  
Victoria Smith — savory  
Susan Soiferman — sweet/dessert

If your name appears in the newsletter for next month's refreshments and you will not be able to provide them, please contact another member to take your place. The refreshment responsibility is rotated in alphabetical order. If you do need to switch with another member, please notify the Hospitality Chairperson, Toni Cox ([ccox@netreach.net](mailto:ccox@netreach.net) or 215-886-6541).

# *June Pot Luck Sign-up List*

Hi All. Looking forward to the June Potluck Supper. Here are the offerings so far.

**Main Course:** Judy Fliegelman  
Cindy Friedman  
Toni Cox  
Suzan Hirsch  
Robin Levenberg

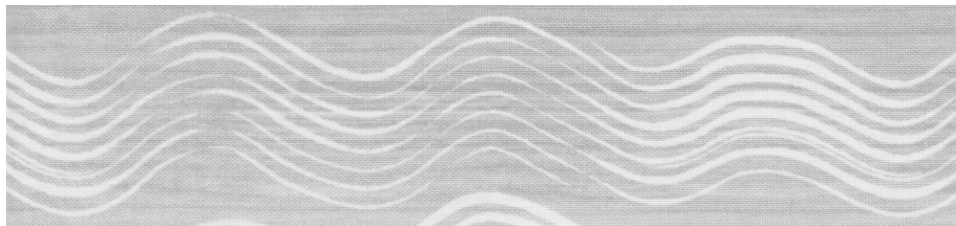
**Salads:** Karoline Wallace  
Terri Ciampitti (pasta salad)  
Diana Hutchins  
Gwen Noone  
Lin Vandenberg  
Gwen Gatto (macaroni salad and Deviled eggs)

**Desserts:** Susan Soiferman (if the BABY is late)  
Annie Cohen  
Debbie Schwartzman  
Barbara Lawn  
Jim Vander Noot (CHOCOLATE)  
Elizabeth VanSchaick

**Hors D'Oeuvres:** Lonni Rossi

One person may bring wine, but if anyone else could also, it would be great. I'll have lemonade and Iced Tea. How about carbonated beverages? My email address is joanndoolley@netzero.com.

Look forward to seeing everyone. Pray for good weather!



# June Pot Luck Directions



## 56 Allandale Ardmore, PA 19003

**From Haverford Rd:** East on Haverford. Cross Remington and Manoa. The 4th street on left after Manoa is Andover. Turn left. Come to STOP sign at a fork in the road. Keep right. We're the fourth house on the right.

**From City Line:** If you found Lankenau Hospital, it is at City Ave and Lancaster (Rt 1). On City Avenue, continue South through 2 lights. The 3rd street after the 2nd light will be Allandale, on your right, Turn right. After 6:PM you may turn into our street. Our house is the 4th on the left after the stop sign.

**Any questions, call Jo-Ann at 610-649-2927**



### **The Renwick Gallery presents "High Fiber"**

**Dates:** March 11 through July 10, 2005 **Location:** Renwick Gallery, Washington DC. "High Fiber" explores how materials such as metal, plastic, clay, glass and wood are handled in ways that are more commonly used with natural fibers. The objects featured in this exhibition are far ranging in approach and aesthetics, from the groundbreaking quilts of Nancy Crow to the exquisite slip-ash baskets of Aaron Yakim to the traditional crazy quilt as interpreted by the Amish.

### **Quilters Unlimited 32nd Annual Quilt Show**

**Dates:** June 3-5, 2005 **Hours:** Fri, Sat 10-6; Sun 11-5.

**Location:** Chantilly VA. For more information, visit <http://www.quiltersunlimited.org>.

### **Annapolis Quilt Guild presents "Quilts by the Bay."**

**Dates:** June 4-5, 2005 **Hours:** Sat 10-5; Sun 11-5.

**Location:** Annapolis High School, 2700 Riva Rd, Annapolis, MD. For more information call: Kathy Kelm at 410-849-2036.

### **NJ Quilt Convention**

**Dates:** June 9 -11, 2005

**Location:** NJ Convention & Expo Center, Edison, NJ. For information call 732-591-0257 or visit <http://www.NJQuilts.org>

### **Quilt Odyssey 2005**

**Dates:** July 28-3, 2005.

**Location:** Hershey Lodge and Convention Center, Hershey, PA. 717-423-5148 or visit <http://www.quiltodyssey.com>. Check out website for contest rules.

### **Pennsylvania National Quilt Extravaganza**

**Dates:** September 15 - 18 2005

**Location:** Fort Washington Expo Center, Fort Washington, Pennsylvania

For more information send \$2 to Mancuso Show Mgmt., PO Box 667, New Hope, PA 18938; 215-862-5828, fax 215-862-9753, or visit <http://www.quiltfest.com>.

## *Around the Guilds*

### **Calico Cutters Workshops**

**September 2005 – Betty Pillsbury**

**October 2005 – Jo Diggs**

All workshops will be held at Fame Fire Company, 200 Rose-dale Avenue, West Chester, PA. Contact Beryl Kuntz ([Berylkuntz@aol.com](mailto:Berylkuntz@aol.com)) to sign up.

### **Main Line Quilters**

(<http://www.mlq.whitecarp.com/index.html>)

### **Love Apple Quilters**

<http://www.loveapplequilters.com/>

**June 14 - Jeanne Hagerman** — "Victorian Crazy Patch"

**July 12 - Maxi Lardiere** — A fun and humorous trunk show of Maxi's quilts.

**August 9 - Jane Hamilton** — Creative Labeling. Fun, no stress labeling techniques.

### **Valley Forge Homestead Quilters**

<http://www.valleyforgequilters.org/>

**Tues, June 21, 2005 – Karen Dever**

Topic: Stack & Whack

**Tues, July 19, 2005 – Carol Blevins**

Topic: Tips, Tricks, & Tidbits. Also: Ice Cream Social

### **Undercover Quilters**

(<http://www.undercoverquilters.com/>)

**Monday, June 13, 2005 – 7:00 PM**

We're having a 'Penny Party'. Bring your pennies, nickels, dimes and quarters to bid on some great sewing items. We'll have UFO's, patterns, books, fabrics, etc. Upon arrival, each person will be given an envelope of slips with their 'number'. These numbers will be used to bid on the items.